



**India Meteorological Department  
(Ministry of Earth Sciences)**

**BULLETIN NO. 6 (BOB/08/2022)**

**TIME OF ISSUE: 0830 HOURS IST**

**DATED: 21.11.2022**

**FROM: INDIA METEOROLOGICAL DEPARTMENT (FAX NO. 24643965/24699216/24623220)**

**TO: CONTROL ROOM, NDM, MINISTRY OF HOME AFFAIRS (FAX.NO. 23093750)**

**CONTROL ROOM NDMA (FAX.NO. 26701729)**

**CABINET SECRETARIAT (FAX.NO.23012284, 23018638)**

**PS TO HON'BLE MINISTER FOR S & T AND EARTH SCIENCES (FAX NO.23316745)**

**SECRETARY, MOES (FAX NO. 24629777)**

**H.Q. (INTEGRATED DEFENCE STAFF AND CDS) (FAX NO. 23005137/23005147)**

**DIRECTOR GENERAL, DOORDARSHAN (23385843)**

**DIRECTOR GENERAL, AIR (23421105, 23421219)**

**PIB MOES (FAX NO. 23389042)**

**UNI (FAX NO. 23355841)**

**D.G. NATIONAL DISASTER RESPONSE FORCE (NDRF) (FAX NO. 26105912, 2436 3260)**

**DIRECTOR, PUNCTUALITY, INDIAN RAILWAYS (FAX NO. 23388503)**

**CHIEF SECRETARY, ANDAMAN & NICOBAR ISLANDS (FAX NO. 03192- 232656)**

**CHIEF SECRETARY, GOVT. OF ANDHRA PRADESH (FAX NO. 0863-2441029, 08645-246600)**

**CHIEF SECRETARY, GOVT. OF TAMIL NADU (FAX NO. 044-25672304)**

**CHIEF SECRETARY, GOVT. OF PUDUCHERRY (FAX NO. 0413-2337575, 2334145)**

**Sub: Depression over Southwest Bay of Bengal**

The Depression over Southwest Bay of Bengal moved northwestwards with a speed of 12 kmph during past 6 hours and lay centred at 0530 hours IST of today, the 21<sup>st</sup> November, 2022 over the southwest Bay of Bengal, near latitude 11.9° N and longitude 84.2° E, about 520 km east-northeast of Jaffna (Sri Lanka), 490 km east-northeast of Karaikal, 580 km southeast of Machilipatnam and 450 km east-southeast of Chennai.

It is likely to move northwestwards and maintain its intensity of depression today, the 21<sup>st</sup> November. Thereafter, it is likely to move west-northwestwards towards south Andhra Pradesh-North Tamilnadu-Puducherry coasts and weaken gradually into a well marked low pressure area around 22<sup>nd</sup> November morning.

**Warnings:**

**(i) Rainfall (warning graphics enclosed)**

- ❖ Light to moderate rainfall is likely at most places with isolated heavy to very heavy rainfall over south Coastal Andhra Pradesh on 21<sup>st</sup>. Light to moderate rainfall is likely at many places with isolated heavy rainfall over North Tamilnadu-Puducherry, north Coastal Andhra Pradesh & Rayalaseema on 21<sup>st</sup> November. Light to moderate rainfall likely at many places with Isolated heavy rainfall over North Tamil Nadu-Puducherry, South Coastal Andhra Pradesh and Rayalaseema on 22<sup>nd</sup> November.
- ❖ Light to moderate rainfall at a few places is likely over north Coastal Andhra Pradesh on 22<sup>nd</sup> and over North Tamil Nadu-Puducherry, South Coastal Andhra Pradesh and Rayalaseema on 23<sup>rd</sup> November.

**(ii) Wind warning:**

- ❖ **Squally wind speed reaching 45-55 kmph gusting to 65 kmph is likely to prevail over** Southwest and adjoining Westcentral Bay of Bengal and along & off Andhra Pradesh, Tamil Nadu, Puducherry and Sri Lanka coasts till 22<sup>nd</sup> November morning and decrease gradually thereafter.
- ❖ **Squally weather with wind speed reaching 40-45 kmph gusting to 55 kmph is likely to prevail over** Gulf of Mannar on 21<sup>st</sup> & 22<sup>nd</sup> November.

**(iii) Sea condition**

- ❖ **Sea condition will be rough to very rough** over Southwest and adjoining Westcentral Bay of Bengal and along & off Andhra Pradesh, Tamil Nadu, Puducherry, Sri Lanka coasts till 22<sup>nd</sup> November morning and improve gradually thereafter.
- ❖ **Sea condition will be rough** over Gulf of Mannar on 21<sup>st</sup> & 22<sup>nd</sup> November and improve gradually thereafter.

**(iv) Fishermen Warning**

**Fishermen are advised not to venture into:**

- ❖ Southwest and adjoining Westcentral Bay of Bengal, Gulf of Mannar and along & off Andhra Pradesh, Tamil Nadu, Puducherry, Sri Lanka coasts till 22<sup>nd</sup> November
- ❖ Gulf of Mannar on 21<sup>st</sup> & 22<sup>nd</sup> November.

**The system is under continuous surveillance and the next message will be issued at 1130 hours IST of today, the 21<sup>st</sup> November, 2022.**

**(RK Jenamani)**  
**Scientist F, Cyclone Warning Division, New Delhi**

*Copy to: ACWC Kolkata/ ACWC Chennai/ CWC Bhubaneswar/CWCVisakhapatnam/MO Port Blair*

**LEGEND: Heavy Rainfall:** 64.5 to 115.5mm, **Very Heavy Rainfall:** 115.6 to 204.4mm **Most Places:** more than 76% of total stations, **Isolated Places:** Less than 25% of total

SAT : INSAT-3D IMG

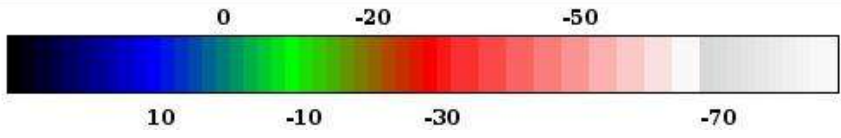
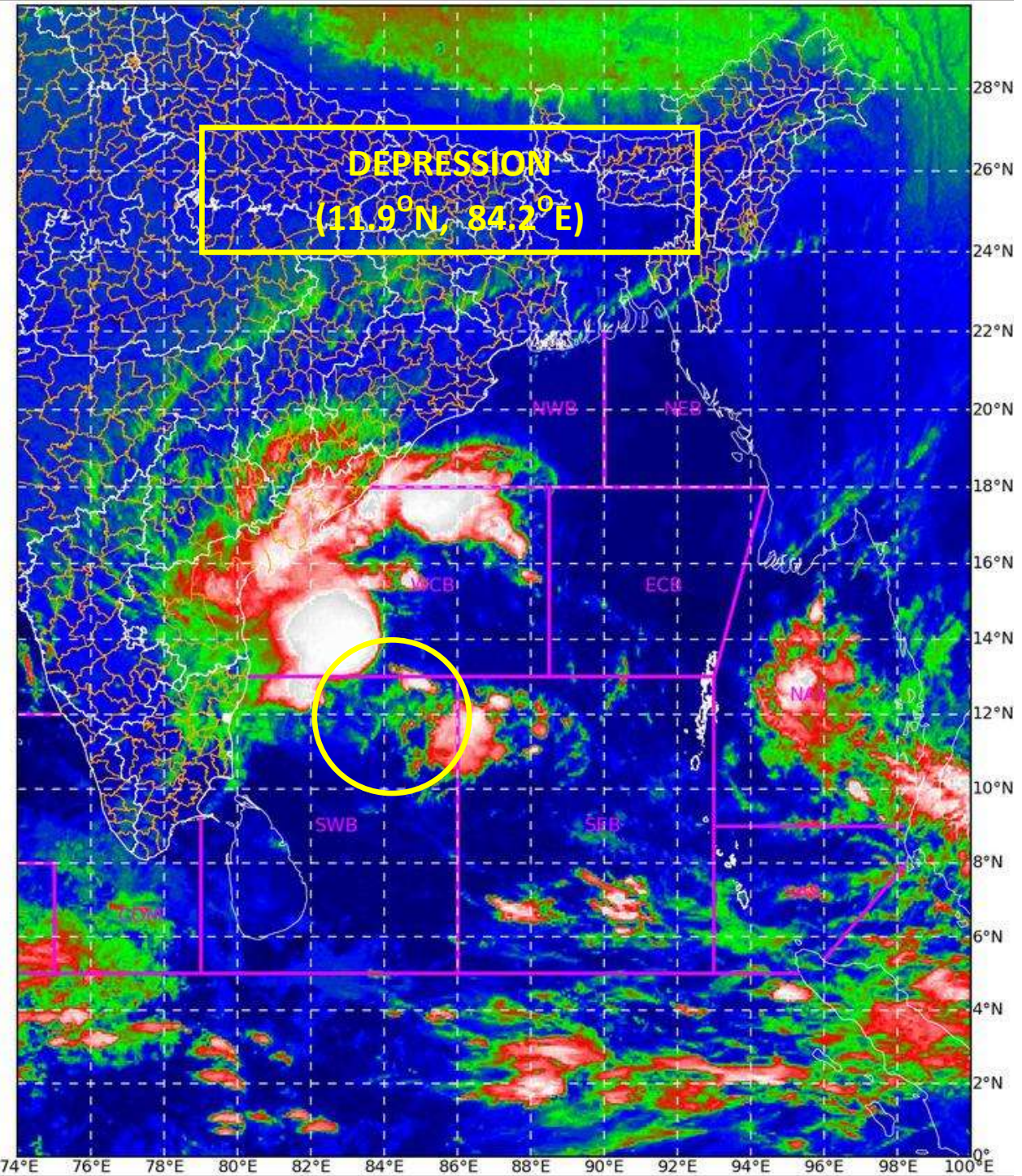
21-11-2022/(0100 to 0126) GMT

IMG\_TIR1\_TEMP 10.8 um

21-11-2022/(0630 to 0656) IST



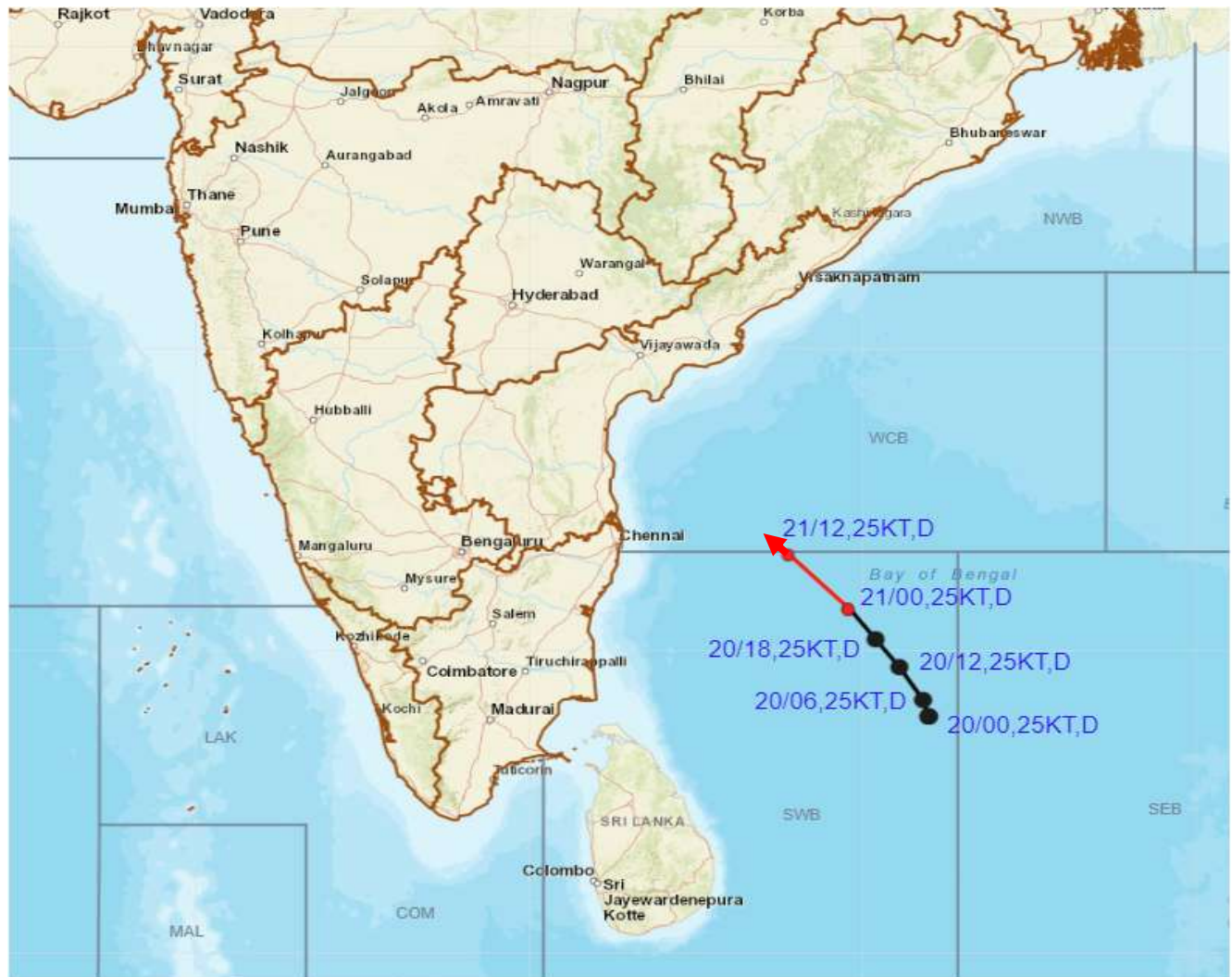
L1C Mercator



Celsius  
IMD, DELHI



## OBSERVED AND FORECAST TRACK OF DEPRESSION OVER SOUTHWEST BAY OF BENGAL BASED ON 0000 UTC OF 21ST NOVEMBER, 2022



DATE/TIME IN UTC

IST=UTC + 0530

L: LOW PRESSURE AREA

WML: WELL MARKED LOW PRESSURE AREA

D: DEPRESSION (17-27 KT)

DD: DEEP DEPRESSION (28-33 KT)

CS: CYCLONIC STORM (34-47 KT)

SCS: SEVERE CYCLONIC STORM (48-63KT)

VSCS: VERY SEVERE CYCLONIC STORM (64-89 KT)

ESCS: EXTREMELY SEVERE CYCLONIC STORM (90-119 KT)

SuCS: SUPER CYCLONIC STORM ( $\geq 20$  KT)



LESS THAN 34 KT



34-47 KT



$\geq 48$  KT



OBSERVED TRACK



FORECAST TRACK



CONE OF UNCERTAINTY

Today  
21/11/2022



**WARNING**



Tomorrow  
22/11/2022



23/11/2022



24/11/2022



25/11/2022



- Heavy Rain
- Strong Winds
- Frost



- Heavy Snow
- Visibility
- Cold Wave

- Thunderstorm
- Cyclone
- Heat Wave

- Dust Storm
- Squall/ Hail
- Sea State

## Fishermen warning graphics



	Squally weather with wind speed 40-45 kmph gusting to 55 kmph
	Squally wind speed with wind speed 45-55 kmph gusting to 65 kmph

**Fishermen are advised not to venture into the marked areas.**